

Pollination and nectariferous plants

- Fruit trees
- Decorative trees
- Shrubs
- Climbers
- Forage crops
- Vegetable & herbs
- Garden flowers

Fruit trees

All citrus sp.

Eg.	Lemon	Orange
	Lumi	Laring

Plant family: *Rutaceae*
 Flowering time: Spring
 If nectar or/and pollen depends on the cultivar



Almond

Lewża, Siġra tal-Lewż
Prunus dulcis
 Plant family: *Rosaceae*
 Flowering time: winter, commonly
 between Dec-Feb
 Nectar
 Pollen



Apple vr.

Eg. Crab apple

Tuffieħ

Malus sylvestris

Plant family: *Rosaceae*

Flowering time: spring, commonly between

March- May

If nectar or/and pollen depends on the cultivar



Carob

Ħarruba

Ceratonia siliqua

Plant family: *Fabaceae*

Flowering time: Autumn, commonly
between Oct- Nov

Nectar

Pollen



Loquat

Naspli

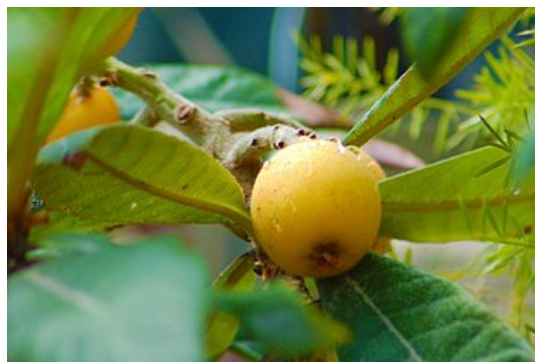
Eriobotrya japonica

Plant family: *Rosaceae*

Flowering time: Autumn/Winter, commonly
between Oct-Dec

Nectar

Pollen



Jujube

Žinžel

Ziziphus zizyphus

Family plant: *Rhamnaceae*

Flowering time: end of Spring/
beginning of Summer, commonly between May-June

Pollen

*



Mulberry sp.

Ċawsla, Siġra tac-Ċawsl

Morus alba

Family plant: *Moraceae*

Flowering time: Spring, commonly between
Apr-May

Pollen

**Olives**

Żebbuġa, Żejtun, Siġra taż-Żebbuġ

Olea europaea subsp. europaea

Family plant: *Oleaceae*

Flowering time: Spring, commonly
between Mar-May

Pollen

**Papaya**

Family plant: *Caricaceae*

Flowering time: Autumn/Spring,
commonly between Oct-Apr

Pollen

Nectar



Wild pear

Langas Bagħal

Pyrus pyraeaster

Family plant: *Rosaceae*

Flowering time: end of Winter/Spring,

Commonly between Feb-Apr

**Persimmon**

Family plant: *Ebenaceae*

Flowering time: Spring

Pollen

Nectar

**Vines cvs.**

Dielja

Family plant: *Vitaceae*

Flowering time: Spring, commonly
between Apr-May

Pollen



Decorative trees

Tree-of-heaven

Xumakk falz

Ailanthus altissima

Family plant: *Simaroubaceae*

Flowering time: end of Spring/Summer, commonly
between May-Jul

Pollen

Invasive - Prohibited through Legal Notice 258 of 2018
(Trees and woodlands protection - Second Schedule
species)

“No person shall propagate, sow, plant, import, export,
transport, sell, exchange or donate any specimen of species listed
in the Second Schedule unless duly permitted..”

<https://era.org.mt/en/Pages/Trees-Woodlands-Protection-Regulations.aspx>



Judas tree

Sigra ta' Ġuda, Harrub ta' Ġuda

Cercis siliquastrum

Family plant: *Fabaceae*

Flowering time: Spring

Pollen



Eucalyptus Tree

Ewkaliptus, Sigra tal-Gammiem

Eucalyptus sp.

Family plant: *Myrtaceae*

Flowering time: Summer

Pollen

Nectar



Invasive - Prohibited through Legal Notice 258 of 2018 (Trees and woodlands protection - Second Schedule species)

“No person shall propagate, sow, plant, import, export, transport, sell, exchange or donate any specimen of species listed in the Second Schedule unless duly permitted..”

<https://era.org.mt/en/Pages/Trees-Woodlands-Protection-Regulations.aspx>

Grevillea

Family plant: *Proteaceae*

Flowering time: Spring, commonly between Apr-May

Pollen

Nectar



Pine sp.

Żnuber

Pinus

Family plant: *Pinaceae*

Flowering time: end of Spring/Summer, commonly between May-Jul

Pollen



Oak

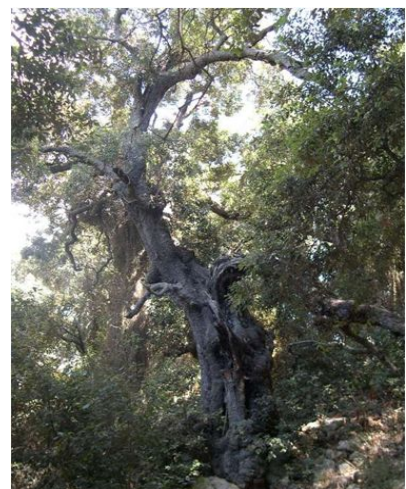
Balluta, Siġra tal-Ġandar

Quercus ilex

Family plant: *Fabaceae*

Flowering time: Spring, commonly between Apr-May

Pollen



False Acacia or Locust tree

Robinja

Robinia pseudoacacia

Family plant: *Fabaceae*

Flowering time: end of Spring/Autumn,

Commonly between May-Oct

Pollen

Nectar

Invasive

*



Willow

Żafżafa

Family plant: *Salicaceae*

Flowering time: Spring, commonly
between Mar-May

Pollen

Nectar



Castor Oil Tree

Riġnu

Ricinus communis

Family plant: *Euphorbiaceae*

Flowering time: Spring/Autumn,
commonly between Mar-Oct

Pollen

Invasive - Prohibited through Legal Notice 258 of 2018
(Trees and woodlands protection - Second Schedule
species)

"No person shall propagate, sow, plant, import, export,



transport, sell, exchange or donate any specimen of species listed in the Second Schedule unless duly permitted..”

<https://era.org.mt/en/Pages/Trees-Woodlands-Protection-Regulations.aspx>

Elms sp.

Ulm selvaġġ

Ulmus

Family plant: *Ulmaceae*

Flowering time: end of Spring/Summer,
commonly between May-Jul

Pollen



Shrubs

Rosemary

Klin

Rosmarinus Officinalis

Family plant: *Lamiaceae*

Flowering time: All year

Pollen

Nectar



Hawthorn, Whithorn

Żagħrun

Crataegus monogyna

Family plant: *Rosaceae*

Flowering time: Spring, commonly
between Mar-May

Pollen

Nectar

*



Pale Bugloss (Blue flower and blue pollen)

Ilsien il-fart abjad, Ilsien il-fart kbir

Echium sp.

Family plant: *Boraginaceae*

Flowering time: Spring, commonly
between Mar-Apr

Pollen



Thyme

Sagħtar

Thymbra capitata

Family plant: *Lamiaceae*

Flowering time: end of Spring/beginning of Summer,
commonly between May-Aug

Nectar

Pollen



Daisy Perennial

Lellux tar-raba

Glebionis segetum

Family plant: *Asteraceae*

Flowering time: Autumn/beginning of Spring, commonly
between Mar-Sept

Pollen



Myrtle

Riħan

Myrtus communis

Family plant: *Myrtaceae*

Flowering time: Summer, commonly
between Jun-Jul

Pollen

Nectar

**Small Maltese June Pear**

Bambinella, Langas tal-Bambinella

Pyrus communis

Family plant: *Rosaceae*

Flowering time: Autumn/Spring, commonly
between Apr-Oct

Nectar (depending on cultivar)

Pollen (depending on cultivar)

**Bay laurel**

Siġra tar-rand, Rand

Laurus nobilis

Family plant: *Lauraceae*

Flowering time: end of Winter/Spring, commonly
between Feb-Apr

Pollen

Nectar



Mediterranean Heath

Erika, Leħjet ix-xiħ, Savina

Erica multiflora

Family plant: *Ericaceae*

Flowering time: Winter/Spring, commonly between
Dec-May

Pollen

Nectar



Spanish broom

Ġenista safra

Spartium junceum

Family plant: *Fabaceae*

Flowering time: Spring, commonly
between Apr-May

Pollen

Nectar

Lavender

Lavanda

Lavandula

Family plant: *Lamiaceae*

Flowering time: end of Spring/beginning of
Autumn, commonly between May-Sept

Pollen

Nectar



Common sage

Salvja tal-ikel

Salvia officinalis

Family plant: *Lamiaceae*

Flowering time: Spring/beginning of
Summer, commonly between Apr-Jun

Pollen

Nectar



Japanese mock orange

Pittosporum

Pittosporum tobira

Family plant: *pittosporaceae*

Flowering time: Spring

Pollen

Nectar

Invasive - Prohibited through Legal Notice 258 of 2018 (Trees
and woodlands protection - Second Schedule species)

"No person shall propagate, sow, plant, import, export,
transport, sell, exchange or donate any specimen of species listed in
the Second Schedule unless duly permitted.."



<https://era.org.mt/en/Pages/Trees-Woodlands-Protection-Regulations.aspx>

Mediterranean Buckthorn

Alaternu

Rhamnus alaternus

Family plant: *Rhamnaceae*

Flowering time: Winter/beginning of Spring,
commonly between Jan-Mar

Pollen

Nectar

*



Climbers

Ivy

Liedna

Hedera helix

Family plant: *Araliaceae*

Flowering time: Autumn

Pollen

Nectar



Japanese Honeysuckle

Lonicera

Lonicera japonica

Family plant: *Caprifoliaceae*

Flowering time: Spring/Summer/Autumn/beginning
of Winter, commonly between Mar-Dec

Pollen



Grape vine, Vines sp.

Dielja, Siġra tal-Għeneb

Vitis vinifera

Family plant: *Vitaceae*

Flowering time: Spring, commonly
between Apr-May

Pollen

*



Chinese Wisteria

Wisteria

Wisteria sinensis

Family plant: *Fabaceae*

Flowering time: Spring

Pollen



Forage crops

White clover

Xnien abjad

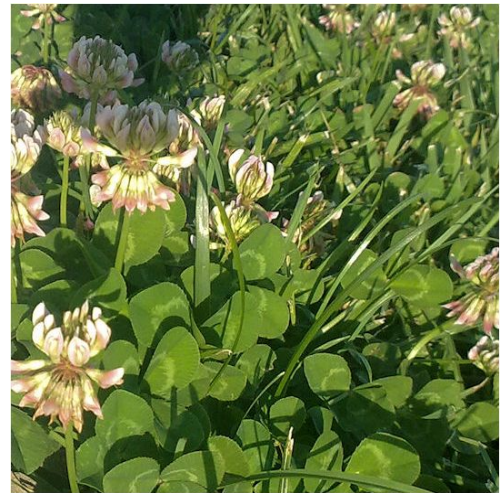
Trifolium repens

Family plant: *Fabaceae*

Flowering time: Spring

Pollen

Nectar



Alfalfa

Nefel

Medicago sativa

Family plant: *Fabaceae*

Flowering time: Spring

Pollen

Nectar

*



Vegetables & herbs

Globe artichoke

Qaqoċċ

Cynara scolymus

Family plant: *Asteraceae*

Flowering time: Spring/beginning of Summer,
commonly between Apr-Jun

Pollen



Jerusalem artichoke

Artiċokk

Helianthus tuberosus

Family plant: *Asteraceae*

Flowering time: end of Spring/Autumn,
commonly between May-Oct

Pollen

Nectar



Wild carrot

Zunnarija salvaġġa

Daucus carota

Family plant: *Apiaceae*

Flowering time: Spring, commonly between
Apr-May

Nectar



Wild celery

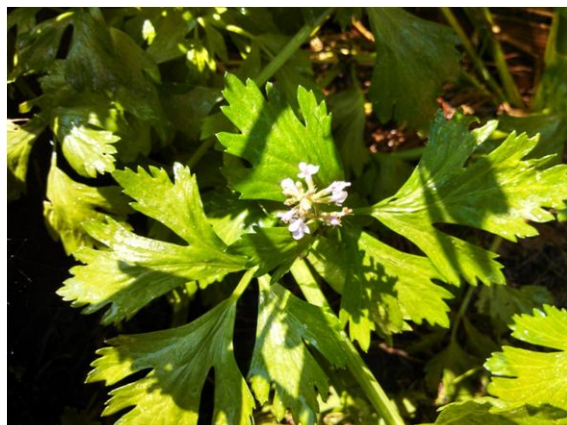
Karfus

Apium graveolens

Family plant: *Apiaceae*

Flowering time: Spring/ Autumn, commonly
between Apr-Oct

Pollen



Broad beans

Ful

Vicia faba

Family plant: *Fabaceae*

Flowering time: end of Winter/Spring,
commonly between Feb-May

Pollen & Nectar



Brassicaceae



Kohlrabi



Broccoli



Cauliflower

Flowering time for all: end of Spring/Autumn, commonly between May-Oct
Pollen

Aubergine (field)

Brunġiel

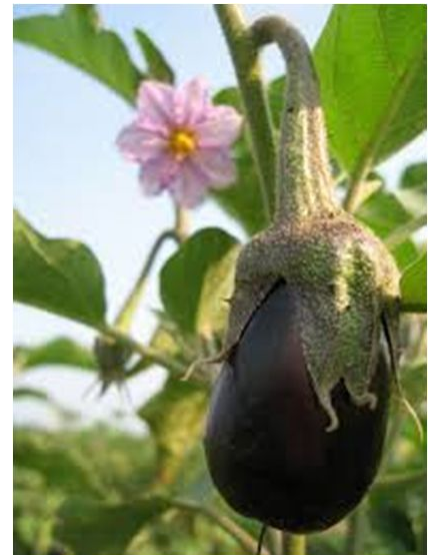
Solanum melongena

Family plant: *Solanaceae*

Flowering time: Autumn

Pollen

Nectar



Melons cv.

Melon (white, orange)

Watermelon

Bettieħa

Dulliegħa

Cucumis melo

Citrullus lanatus



Pollen & Nectar

Family plant for all: *Cucurbitaceae*

Flowering time for all: end of Spring/Summer, commonly
between May- Aug

Mint

Nagħniegħ

Mentha spicata

Family plant: *Lamiaceae*

Flowering time: end of spring/Summer, commonly
between May-Aug

Nectar



Strawberries (field)

Frawli

Fragula

Flowering time: Spring, commonly
between Mar-Apr

Pollen

Nectar



Pumpkin

Qargħa ħamra

Cucurbita pepo

Family plant: *Cucurbitaceae*

Flowering time: end of Spring/ beginning
of Summer, commonly between May-Jun

Pollen

Nectar



Parsnip

Family plant: *Apiaceae*

Flowering time: Spring

Pollen



Chick pea

ċiċri

Cicer arietinum

Family plant: *Fabaceae*

Flowering time: end of Winter/Spring, commonly
between Feb-May

Pollen

Nectar



Garden pea

Piżelli

Pisum sativum

Family plant: *Fabaceae*

Flowering time: end of Winter/Spring, commonly
between Feb-May

Pollen



Capers cv.

Kappar

Capparis

Family plant: *Capparidaceae*

Flowering time: Spring/beginning of Autumn,
commonly between Apr-Sept

Pollen



Okra/bāmiyā/lady fingers

Abelmoschus esculentus

Family plant: *Malvaceae*

Flowering time: Spring, commonly
between Apr-May

Pollen



Balm

Nagħniegħ in-naħal, melissa

Melissa officinalis

Family plant: *Lamiaceae*

Flowering time: end of Spring/Summer, commonly
between May-Jul

Pollen

Nectar



Marjoram

Merqtux, riegnu

Origanum majorana

Family plant: Lamiaceae

Flowering time: end of Spring/Summer, commonly
between May-Aug

Pollen

Nectar



Angelica Archangelica

Family plant: Apiaceae

Flowering time: Spring

Pollen

Nectar



Anise

Anisi, Flewwa

Pimpinella anisum

Family plant: Apiaceae

Flowering time: Spring, commonly

Between Apr-May

Pollen

Nectar



Basil

Ħabaq

Ocimum basilicum

Family plant: Lamiaceae

Flowering time: end of Summer/beginning of
Autumn, commonly between Aug-Sept



Pollen & Nectar

Cucumbers and Gherkins

ħjara

Cucumis sativus

Family plant: *Cucurbitaceae*

Flowering time: end of summer/beginning
of Autumn, commonly between Aug- Sept

Pollen



Common borage

Fidloqqom

Borago officinalis

Family plant: *Boraginaceae*

Flowering time: Winter/Spring, commonly
Between Jan-May

Pollen

Nectar



Cumin

Kemmun

Cuminum cyminum

Family plant: *Apiaceae*

Flowering time: end of spring/beginning
of Summer, commonly between May-Jun

Pollen

Nectar



Garden onion

Basla

Allium cepa

Family plant: *Amaryllidaceae*

Flowering time: Spring/beginning of
Summer, commonly between Apr-Jun
Pollen



Wild sage

Salvja selvaġġa

Salvia verbenaca

Family plant: *Lamiaceae*

Flowering time: Spring/beginning of
Summer, commonly between Apr-Jun
Pollen
Nectar



Garden flowers

Note: all coloured flowers provide a quota of pollen and nectar, except those with very long narrow flower tubes, double flowers and some hybrids.

Crocus

Żagħfran selvaġġ skars

Crocus longiflorus

Family plant: *Iridaceae*

Flowering time: Autumn/beginning of Winter,
commonly between Oct-Dec
Pollen
Nectar



Hoary Stocks

Gizi

Matthiola incana

Family plant: *Brassicaceae*

Flowering time: Spring/Summer, commonly
between Apr-Jul

Pollen



Sunflower

Warda tax-xemx

Helianthus annuus

Family plant: *Asteraceae*

Flowering time: end of Spring/Autumn, commonly
between May-Oct

Pollen

Nectar

*



Carnation (field)

Qronfla

Dianthus caryophyllus

Family plant: *Caryophyllaceae*

Flowering time: Spring/Summer, commonly
between Apr-Aug

Pollen



Red poppy

Peprina ħamra

Papaver rhoeas

Family plant: *Papaveraceae*

Flowering time: Spring

Pollen



Daisy/corn chamomile

Bebuna tar-raba

Anthemis arvensis

Family plant: *Asteraceae*

Flowering time: Winter/Spring, commonly
between Dec-Apr

Pollen

Nectar



*Images have been provided by Malta Wild Plants. For further information visit the site:

http://www.maltawildplants.com/ASTR/Anthemis_arvensis.php